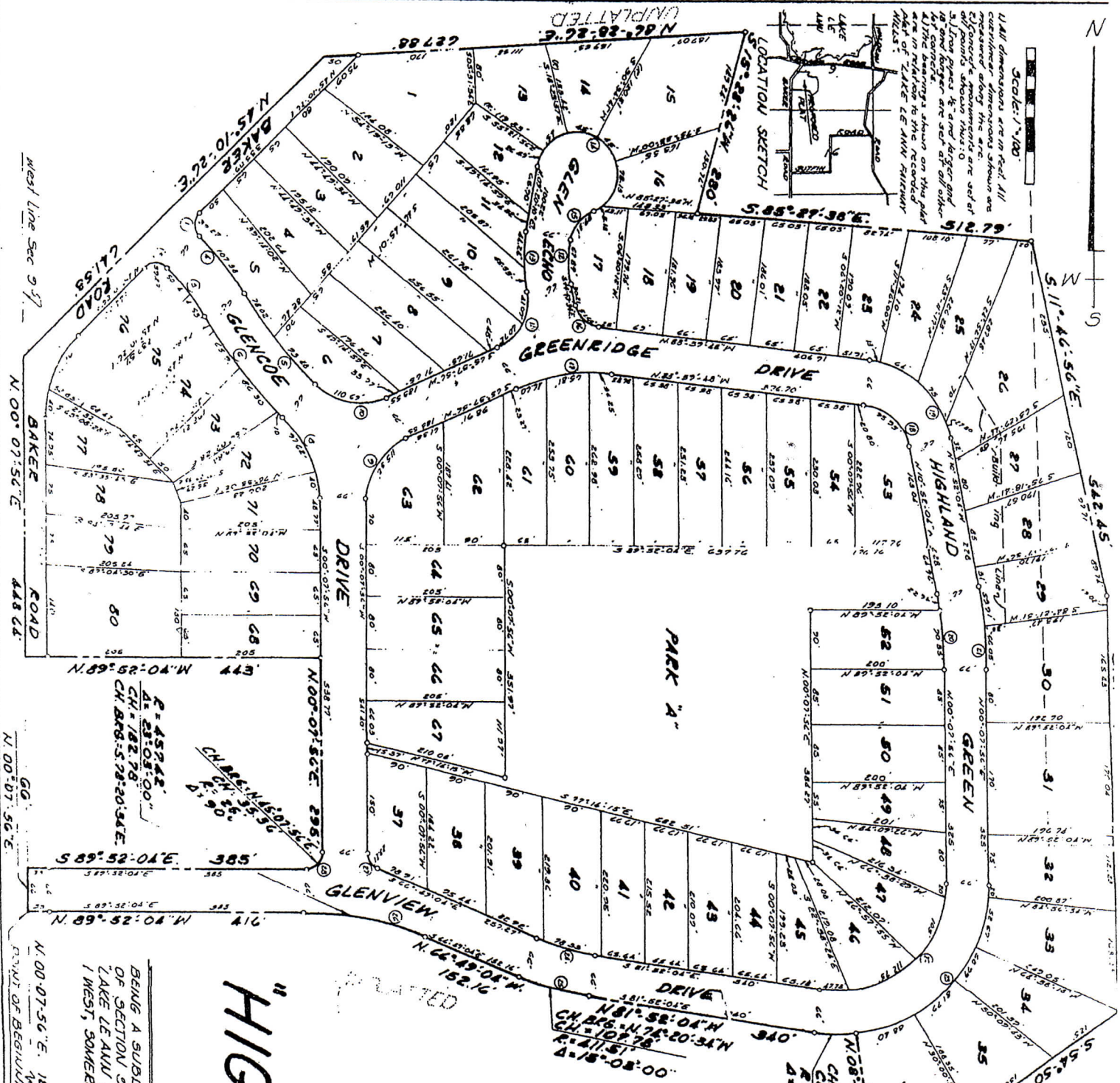
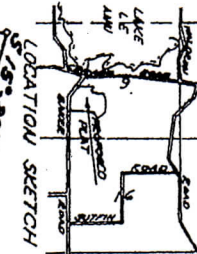


N  
S

SCALE: 1"=100'

All dimensions are in feet. All curved dimensions shown are measured along the arc. Offsets and movements are set at 5' from poles. 4' and 8' are set at 1/2' from poles. 4' and 8' are set at 1/2' from poles. 4' and 8' are set at 1/2' from poles.



# "HIGHLAND GREEN"

BEING A SUBDIVISION PART OF THE SOUTHWEST QUARTER OF SECTION 9, AND A PART OF LOT 32 IN LAKE LEANU FAIRWAY HILLS, TOWNSHIP 5 SOUTH, RANGE 1 WEST, SOMERSET TOWNSHIP, HILLSDALE COUNTY, MICHIGAN

N. 00°-07'-56"E. 1861.57'  
SOUTHWEST CORNER SEC. 9,  
T. 5 S., R. 1 W.

CURVE NO.	RADIUS	DELTA	CHORD	CHORD BEARING
1	307.00	90°-00'-00"	35.36'	N. 00°-10'-26"E.
2	307.00	90°-00'-00"	35.36'	S. 87°-45'-34"E.
3	385.24'	15°-58'-00"	21.44'	S. 88°-00'-34"E.
4	451.24'	15°-58'-00"	107.13'	S. 88°-00'-34"E.
5	719.24'	15°-58'-00"	1760.57'	N. 88°-00'-34"W.
6	719.24'	15°-58'-00"	1862.57'	N. 88°-00'-34"W.
7	148.84'	45°-02'-50"	123.98'	N. 82°-59'-11"E.
8	175.84'	45°-02'-50"	134.11'	S. 82°-00'-48"E.
9	101.05'	45°-02'-50"	109.33'	N. 82°-58'-56"E.
10	711.00'	45°-02'-50"	164.02'	N. 82°-58'-56"E.
11	711.00'	45°-02'-50"	24.02'	S. 87°-57'-03"W.
12	270.72'	75°-00'-00"	67.93'	N. 00°-09'-50"W.
13	270.72'	75°-00'-00"	67.93'	N. 00°-09'-50"W.
14	60.00'	25°-57'-59"	105.61'	S. 82°-50'-57"E.
15	60.00'	25°-57'-59"	66.92'	N. 82°-59'-09"E.
16	40.00'	25°-57'-59"	46.15'	N. 82°-59'-09"E.
17	222.00'	30°-48'-14"	146.88'	N. 82°-59'-09"E.
18	78.32'	72°-47'-41"	67.42'	S. 87°-15'-54"E.
19	141.50'	72°-47'-41"	121.83'	S. 87°-15'-54"E.
20	350.12'	110°-00'-00"	113.17'	S. 05°-22'-04"E.
21	350.12'	110°-00'-00"	125.71'	S. 05°-22'-04"E.
22	46.24'	28°00'-00"	33.74'	S. 87°-07'-52"W.
23	46.24'	28°00'-00"	33.74'	S. 87°-07'-52"W.
24	518.51'	15°-03'-00"	90.50'	N. 74°-20'-34"W.
25	412.51'	15°-03'-00"	107.78'	N. 74°-20'-34"W.
26	427.42'	25°-03'-00"	462.28'	S. 23°-20'-34"E.
27	427.42'	25°-03'-00"	274.81'	N. 53°-20'-34"W.
28	307.00	90°-00'-00"	35.36'	S. 85°-07'-56"E.

CH BRS-5-89°-56'-00"W.  
CH C6-44'  
R=288.94'  
D=16°-28'-52"

CH BRS-5-89°-56'-00"W.  
CH C6-44'  
R=288.94'  
D=16°-28'-52"

West Line Sec 9-57

N. 00°-07'-56"E. 448.64'

N. 00°-07'-56"E.

N. 00°-07'-56"E. 1861.57'