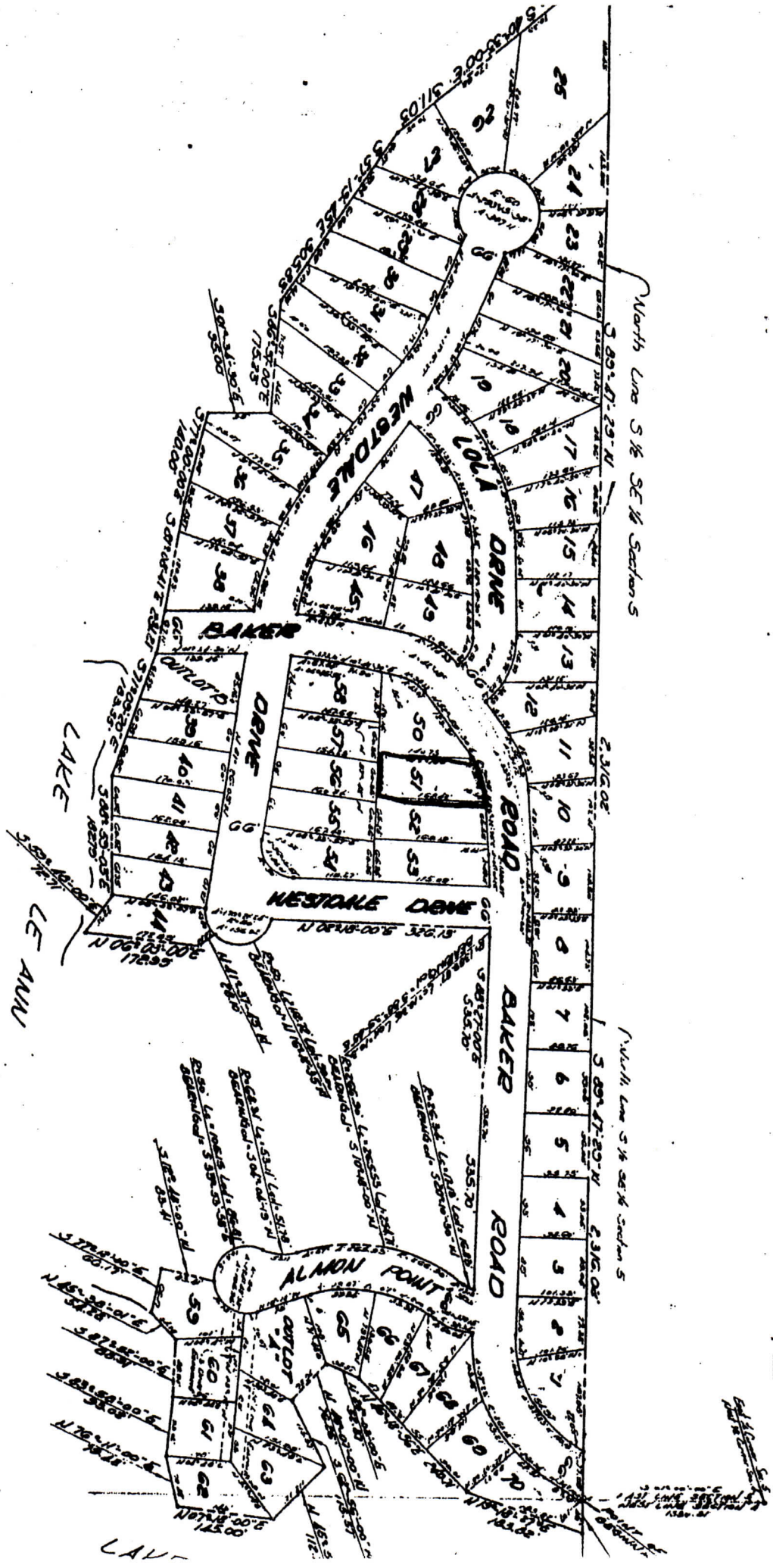


"LAKE LE ANN - WESTDALE"

BEING A SUBDIVISION PART OF THE SOUTH 1/4 OF THE SOUTH EAST 1/4 OF SECTION 5 AND PART OF THE SOUTH 1/4 OF THE SOUTHWEST 1/4 OF SECTION 4, TOWN 5 SOUTH, RANGE 1 WEST, SOWERSET TOWNSHIP, HILLSDALE COUNTY, MICHIGAN



LAKE