

5184

REGISTERS OFFICE
 County of Hillsdale
 State of Michigan

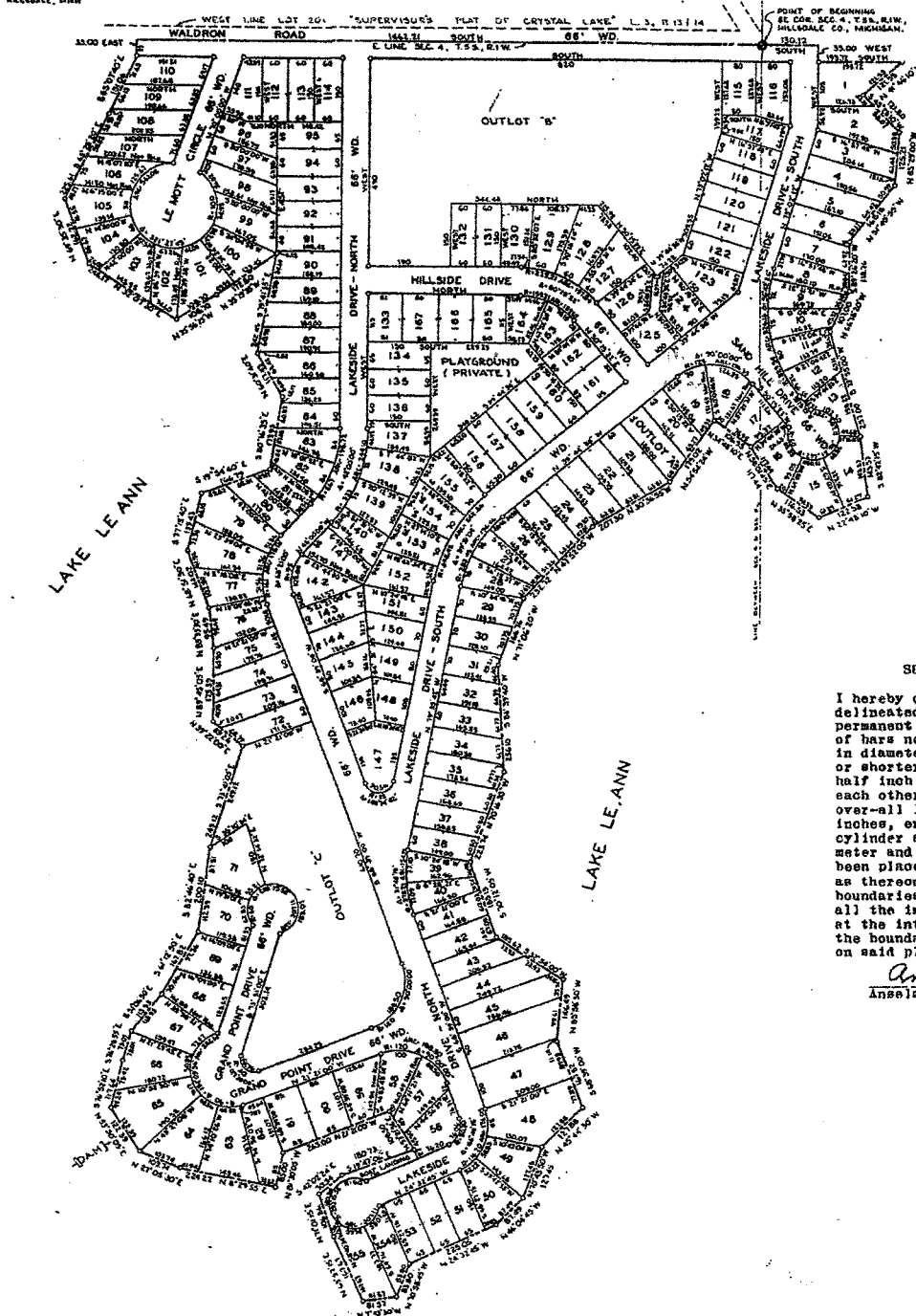
Received for record this 21st
 day of October A. D. 1960
 at 7:30 o'clock A. M. and Recorded
 in Liber 6 of Plats
 page 203
Elizabeth A. Smith
 Register of Deeds

"LAKE LE ANN - GRAND POINT"
 BEING A SUBDIVISION PART OF S. 1/2 SEC. 4, & PART OF NE. 1/4 SEC. 9,
 T. 5 S., R. 1 W., SOMERSET TWP., HILLSDALE COUNTY, MICHIGAN

SCALE: 1" = 600'

ALL DIMENSIONS GIVEN ARE IN FEET AND DECIMALS THEREOF.
ALL CURVILINEAR DIMENSIONS SHOWN ARE ALONG THE ARC.

CERTIFIED TRUE BY
A. J. HATT, R.L.S., #9208



SURVEYOR'S CERTIFICATE

I hereby certify that the plat hereon delineated is a correct one and that permanent metal monuments consisting of bars not less than one-half inch in diameter and 36 inches in length, or shorter bars of not less than one-half inch in diameter lapped over each other at least 6 inches with an over-all length of not less than 36 inches, encased in a concrete cylinder at least 4 inches in diameter and 36 inches in depth have been placed at points marked thus (O) as thereon shown at all angles in the boundaries of the land platted, at all the intersections of streets, and at the intersections of streets with the boundaries of the plat as shown on said plat.

Anselm J. Hatt
 Anselm J. Hatt, R.L.S., #9208