

"LAKE LE ANN-GRAND VIEW"

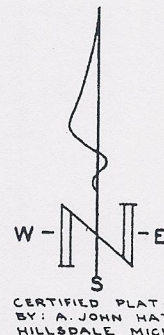
BEING A SUBDIVISION PART OF W 1/2, NW 1/4 SEC. 10 & PART OF E 1/2, NE 1/4 SEC. 9, T. 5 S., R. 1 W., SOMERSET TWP., HILLSDALE COUNTY, MICHIGAN

NW CORNER SEC. 10, T. 5 S., R. 1 W., SOMERSET TWP., HILLSDALE COUNTY, MICHIGAN, POINT OF BEGINNING.

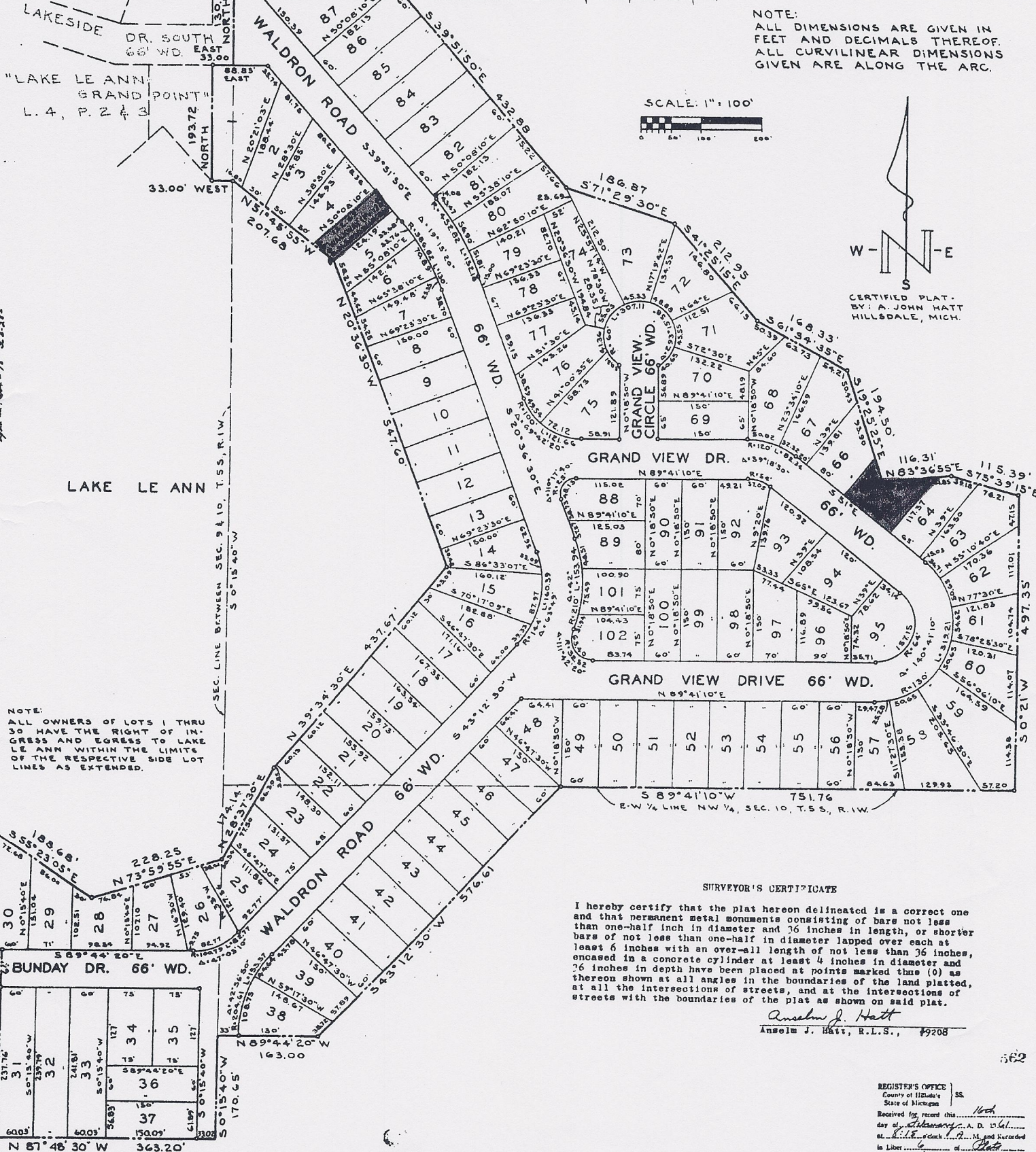
S. LINE "SUPERVISOR'S PLAT OF CRYSTAL LAKE", L. 3, P. 13 & 14

NOTE: ALL DIMENSIONS ARE GIVEN IN FEET AND DECIMALS THEREOF. ALL CURVILINEAR DIMENSIONS GIVEN ARE ALONG THE ARC.

SCALE: 1" = 100'



CERTIFIED PLAT BY: A. JOHN HATT, HILLSDALE, MICH.



NOTE: ALL OWNERS OF LOTS 1 THRU 30 HAVE THE RIGHT OF INGRESS AND EGRESS TO LAKE LE ANN WITHIN THE LIMITS OF THE RESPECTIVE SIDE LOT LINES AS EXTENDED.

SURVEYOR'S CERTIFICATE

I hereby certify that the plat hereon delineated is a correct one and that permanent metal monuments consisting of bars not less than one-half inch in diameter and 36 inches in length, or shorter bars of not less than one-half in diameter lapped over each at least 6 inches with an over-all length of not less than 36 inches, encased in a concrete cylinder at least 4 inches in diameter and 36 inches in depth have been placed at points marked thus (O) as thereon shown at all angles in the boundaries of the land platted, at all the intersections of streets, and at the intersections of streets with the boundaries of the plat as shown on said plat.

Anselm J. Hatt
Anselm J. Hatt, R.L.S., #9208

REGISTER'S OFFICE
County of Hillside's SS
State of Michigan
Received for record this 11th day of February, A. D. 1961, at 11:15 o'clock P. M. and recorded in Liber 6 of Plat page 67. *Charles G. Platt* Register of Deeds