

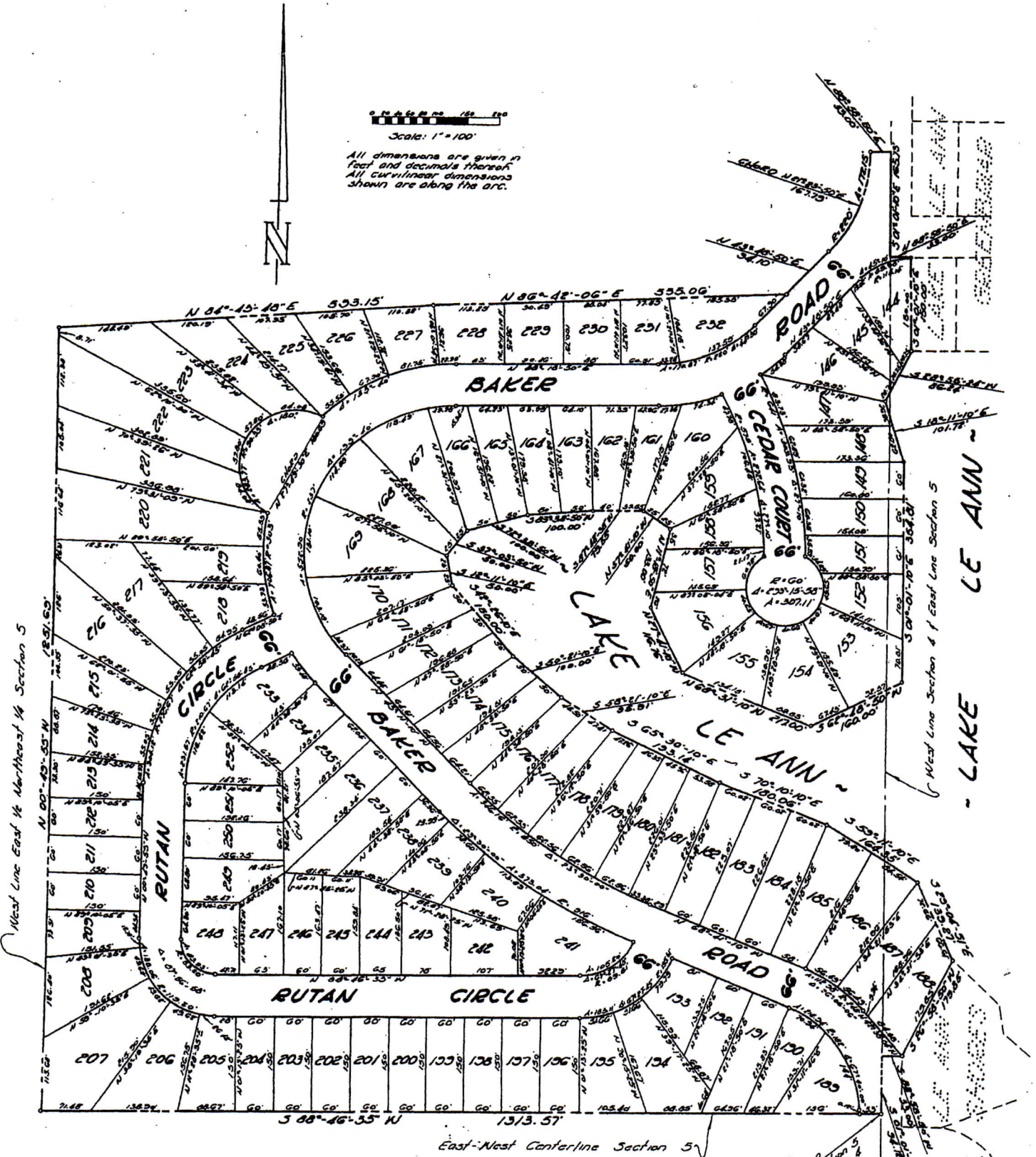
"LAKE LE ANN - GREENBRIAR PLAT TWO"

BEING A SUBDIVISION PART OF THE EAST 1/2 OF THE NORTH-EAST 1/4 OF SECTION 5 AND PART OF THE WEST 1/2 OF THE NORTHWEST 1/4 OF SECTION 4, TOWN 5 SOUTH, RANGE 1 WEST, SOMERSET TOWNSHIP, HILLSDALE COUNTY, MICHIGAN



Scale: 1" = 100'

All dimensions are given in feet and decimals thereof. All curvilinear dimensions shown are along the arc.



FARNHAM, MOORE & HERRIES
ENGINEERS-SURVEYORS
TOLEDO, OHIO

Point of Beginning
1/4 Corner Section 5
1/4 Corner Section 4
Lake Le Ann
Survey 7 Aug 1911