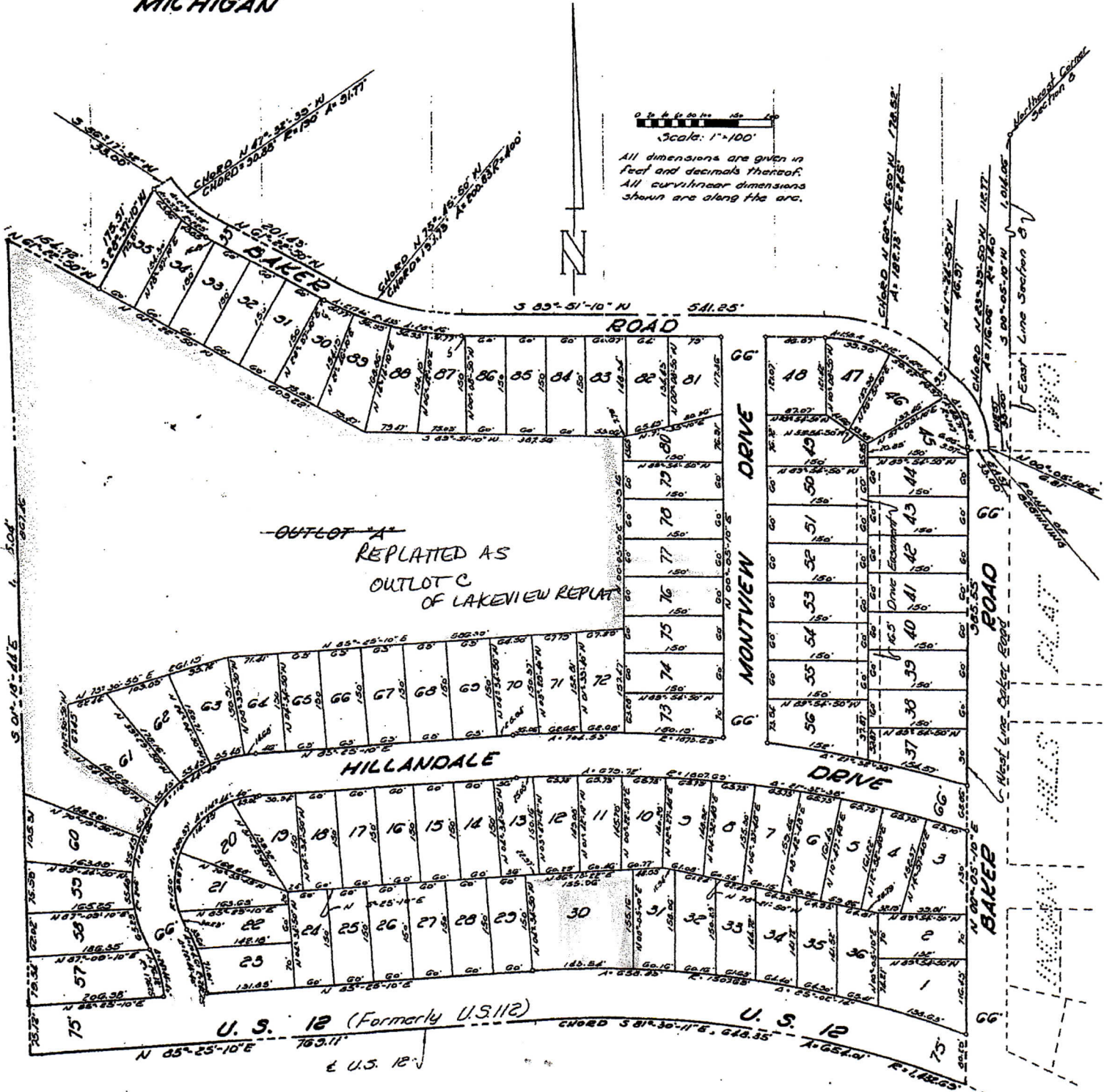


"LAKE LE ANN - LAKEVIEW"

BEING A SUBDIVISION PART OF THE NORTH-EAST 1/4 OF SECTION 8, TOWN 5 SOUTH, RANGE 1 WEST, SOMERSET TOWNSHIP, HILLSDALE COUNTY, MICHIGAN



Oct. 8, 1962
 CERTIFICATE AS TO STATE TRUNK LINE OF FEDERAL AID ROADS
 We hereby certify that said plat appears to include land located on a state trunk line or federal aid road.
 Hillsdale County Plat Board by:
George B. Clark
 George B. Clark, County Clerk

Willard L. Smith
 Willard L. Smith, Drain Treasurer
Owen Acemibegger
 Owen Acemibegger, Drain Commissioner

EXAMINED AND APPROVED
 Date *December 19, 1962*
Billie S. Farnum
 BILLIE S. FARNUM
 AUDITOR GENERAL
 By *Richard E. Lomas*
 Richard E. Lomas - Plat Examiner

FARNHAM, MOORES & MURRIES
 ENGINEERS-SURVEYORS
 TOLEDO, OHIO